

Quick Reference Guide

This Quick Reference Guide has been produced to assist Healthcare Professionals and other users with only the functional aspects of the system. The guide does not replace the general safety warnings, cautions and recommendations provided in the product instructions for use, part number 630933EN.

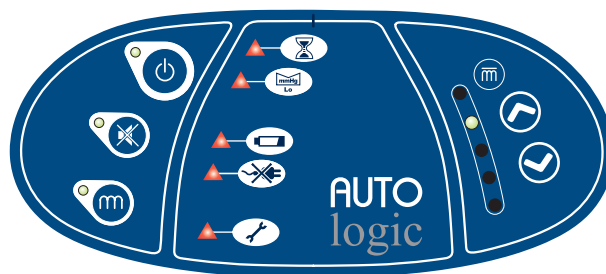
Refer to the product instructions for use before using this product.

Indications:

- The Auto Logic® and Aura Logic® mattresses are designed for patients weighing up to 200 kg (440 lb).
- The *Auto Logic* and *Aura Logic* systems are indicated for the prevention and/or management of all categories of pressure ulcer¹, when combined with an individualised, comprehensive pressure ulcer protocol.

Contraindication: Do not use *Auto Logic* and *Aura Logic* systems for patients with unstable spinal fractures.

Caution: If patients have other unstable fractures, or conditions which may be complicated by a soft or moving surface, advice should be sought from an appropriate clinician before use.



The yellow Wait indicator is illuminated when the mattress/seat is being inflated. The indicator remains illuminated until the mattress/seat has been fully inflated.



The red Low Pressure indicator is illuminated whenever the pump detects low pressure within the mattress/seat. An audible alarm sounds unless cancelled by the mute button. The indicator extinguishes once normal pressure is reached. Check CPR is closed and tubeset is connected properly.



The yellow Battery Low indicator illuminates two hours before battery failure. One hour before battery failure, the pump defaults to Reactive (Constant Lower Pressure) (CLP) mode, an audible alarm sounds and the yellow indicator flashes.



The red Power Fail indicator illuminates when a mains power failure has been detected and no battery backup is available. An audible alarm sounds until power is resumed or the pump is switched off using the Run/Standby button.



The yellow Service indicator illuminates and remains on after a set number of running hours; this indicates that the pump is ready for a service. The pump continues to function normally even when the service indicator is illuminated. If the yellow Service indicator flashes, the pump has detected an internal fault and a Service Engineer should be called.



During an alarm condition (except Power Fail Alarm), the sound of the alarm can be muted by pressing this button. The yellow indicator then remains on but the alarms are muted for 15 minutes or until the alarm condition has been corrected.



Selects the Reactive (Constant Lower Pressure) (CLP), non-alternating mode. The yellow indicator illuminates when the pump is in this mode. When the Active (Alternating) mode (default) is selected, the yellow indicator is switched off. Press this button for approximately 4 seconds to activate the Reactive (CLP) Mode. The change in the mode will occur at the end of the next complete alternating cycle, and so a maximum 10 minute delay may be experienced.



Press and hold down the Autofirm button for two seconds to enter Autofirm mode. Once, activated, Autofirm creates a temporary firm surface to allow nursing procedures to be performed. Autofirm lasts 15 minutes, after which the pump will default back to the previous setting. When the pump is in Autofirm mode the Reactive (CLP) and Comfort Control LEDs are illuminated. **This operation will not function whilst a seat cushion is connected.**



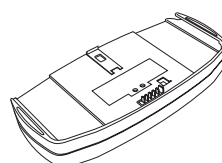
The mattress/seat cell pressure can be manually adjusted for patient comfort using the buttons on the pump control panel. The pressure setting is indicated by the green indicator to the left of the buttons.

Accessories

Battery Pack

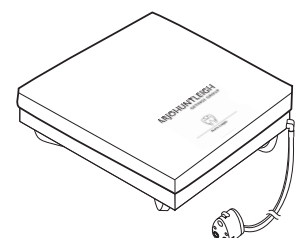
(Part No. BBP600)

CAUTION: The battery pack is not suitable for use in the homecare environment.



Aura Logic Seat Cushion

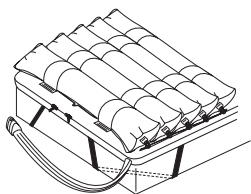
(Part No. PXS001)



1. NPUAP/EPUAP International Pressure Ulcer Guideline, 2009.

Installation

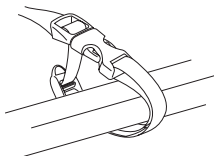
Auto Logic 110 (Mattress Overlay)



Place the overlay on top of the base mattress, with the tube-set located near the foot end of the bed and the CPR at the head end. The cells of the mattress must be uppermost.

Secure the overlay to the base mattress using the four corner straps.

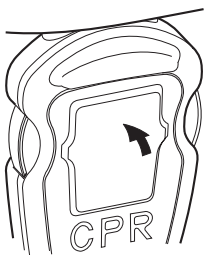
Auto Logic 175/200 (Mattress Replacement)



Place the Mattress Replacement directly onto the bed base, with the tube-set located near the foot end of the bed and the CPR at the head end. The cells of the mattress must be uppermost.

Use the straps provided (4 on each side) to ensure that the MR is secured to the moving parts of the bed platform.

To Complete the Mattress Installation

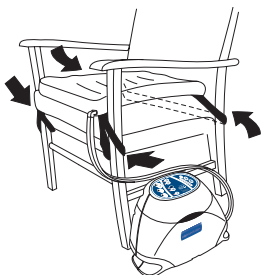


Zip the protective cover over the mattress. Ensure that the logo is uppermost and at the foot end of the mattress.

Ensure that the CPR unit is clicked into the closed position.

Ensure CPR unit and power cord are clear of profiling (moving) bed mechanisms or other possible entrapment areas. **The CPR must be accessible at all times.**

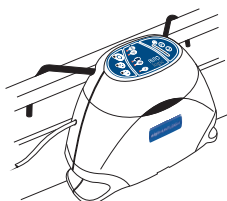
Aura Logic Seat Cushion



Place the cushion on top of the chair surface. From a standing position in front of the chair and facing it, ensure that the cells are uppermost, the tube-set appears from the front right corner of the cushion and the cells are in a horizontal position across the chair with the 'V' shape pointing towards the front.

Do not use the seat cushion without a foam cushion beneath it and always use the seat cushion with the protective top cover.

Installing the Pump

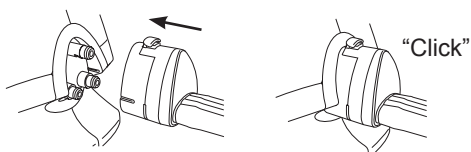


Position the pump, feet down, on any convenient horizontal surface or alternatively suspend from the bed foot rail by means of the swing out hooks.

Ensure that the mattress/seat tube-set is not "kinked" or twisted and connect it

to the pump until it clicks into place. Ensure that the tube-set is securely connected to the pump.

Insert the mains power plug into a suitable mains power socket.



ArjoHuntleigh AB
Hans Michelsengatan 10
211 20 Malmö, Sweden
www.arjohuntleigh.com

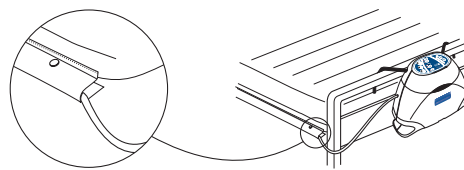
® and ™ are trademarks of ArjoHuntleigh

As our policy is one of continuous improvement, we reserve the right to modify designs without prior notice.

Cable Management

Locate the flap running along the mattress on the opposite side to the tubeset and CPR.

Run the straight part of the cable along the side of the mattress securing the flap round the cable using the press studs.



Safety Sides

Regarding the use of safety sides, always refer to your local trust policy AND the product instructions for use.

Quick Start

When the Auto Logic pump is switched on at the mains supply or a battery pack is connected, an audible beep will sound and a self-diagnostic check will run for approximately 10 seconds. When the check is complete a second audible beep will sound and the pump is ready for use.



Press the Run/Standby button on the control panel of the pump.

Allow approximately 7 minutes for the mattress overlay, 15 minutes for the mattress replacement or 3 minutes for the seat to inflate fully.

Place a bed sheet over the mattress and tuck in loosely. Once the patient is on the mattress, the pump will automatically sense and adjust the pressure in the cells to support the patient.

Transport Mode

To transport a patient using the Auto Logic mattress system press the Run/Standby button for 2 seconds to set the pump to standby and then disconnect the tube-set from the pump. This automatically switches the system into transport mode. The patient remains supported by the mattress for up to 12 hours.

CPR CONTROL

IN THE EVENT OF CARDIAC ARREST

In the event of a patient suffering cardiac arrest and CPR needing to be administered:

To Activate the CPR:
Press the two CPR release buttons simultaneously.

To Reset the CPR:
Push the front of the CPR unit until it clicks into place.



630934EN_02: 12/2014