

# GAINSBOROUGH

Specialist Bathing



# Henley



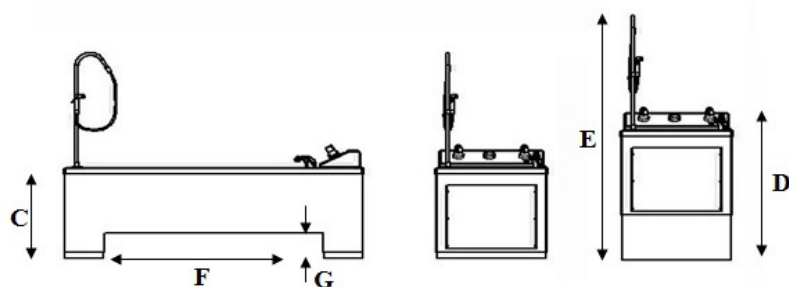
# Contents

1. Cover
2. Contents
3. Pre-installation 1.
4. Pre-installation 2.
5. Pre-installation / water pressure.
6. Installation 1.
7. Installation 2.
8. User Guide 1.
9. User Guide 2.
10. Maintenance / Trouble shooting.
11. Warranty.

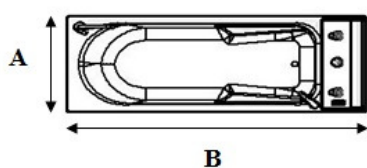


**GAINSBOROUGH**   
Specialist Bathing

# Pre-Installation Requirements



## Dimensions



A: (750mm)	B: (2000mm)
C: (685mm)	D: (1083mm)
E: (1943mm)	F: (1120mm)
G: (145mm)	

Minimum Dimensions for Access:  
Doorway: - 825mm. Corridor: - 825mm

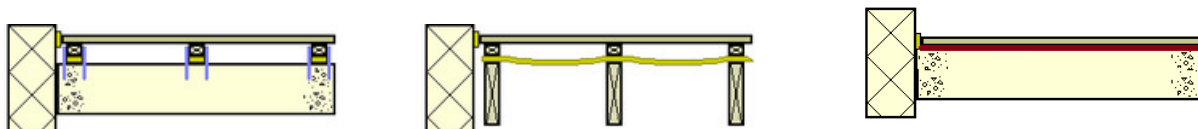
Consideration must be allowed to manoeuvre the bath around hallways etc.

This document details the requirements which must be in place to ensure the bath can be installed correctly

## Floating Floors

The definition covers a multitude of floor finishes. Typical examples below.

It is imperative that before any work is carried out that an understanding of the floor composition is carried out.



1. Floating floor fixed to wood Supports over concrete Joists
2. Floating floor fixed to wood
- 3 Floating Floor on cushion material

Dependent upon the sub-structure a decision can be made as to whether it is feasible to install a powered bath with chair. If the bath is a platform bath this is not an issue as there is little or no lateral load. The issue arises when it is necessary to support the cantilever effect of the chair and patient.

Read below to address the floating floor that affects your installation:

1.

It is feasible to tackle this type of floor in two ways.

a) Remove a section of the surface floor and 'build up' from the concrete sub-floor. This can be done by creating a 'tray' and fill this using a concrete mix. Alternatively timber joists can be anchor bolted to the concrete sub-floor to provide the needed support. The finish should come level with the surface floor.

b) If the void is small it is acceptable to drive through with Rawl/Coach bolts. This may require a small section of the surface floor being removed and material such as sheet wood inserted to fill the area.

2.

This type of void requires the surface floor removing and Noggins introduced to brace between the Joists. Particular attention should be made on the area where the foot plate of the bath is to be sited.

3.

Dependent upon the void size it is usually acceptable to remove the material (often 100mm/4" polystyrene) and back filling with concrete.

Under No Circumstances should fixing be made to the surface floor alone.

# Pre-Installation Requirements

¾" BSP Male hot water inlet, 30mm from the floor, against the wall, 200mm from the left hand side of the front (tap end) of the bath.

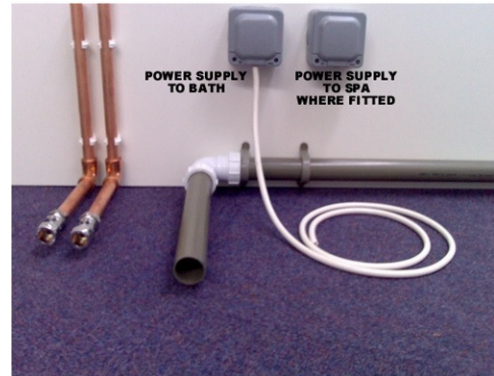
¾" BSP Male cold water inlet, 30mm from the floor, against the wall, 250mm from the left hand side of the front of the bath.

40mm Waste outlet @ 3ltr/Sec, 30mm from the floor, against the wall, 290mm from the left hand side of the front of the bath.

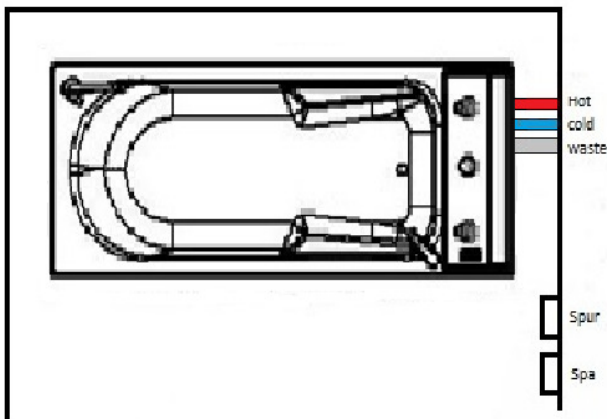
A 5 Amp IP65 Non Switch Fused Spur, with 2m of 1.5mm 3 core round cable protected inside plastic conduit to the bath within 200mm of the tap end of the bath, positioning and specification to be in accordance with current IEE regulations.

An additional 13Amp power supply will be required if a spa is fitted.

## Picture for visual reference only



## DIMENSIONS TO BE TAKEN FROM THIS SIDE



Minimum distance between the walls and baths bath sides is 150mm.

When deciding on the position of the bath there are a number of points that should be considered.

1. Hoist and wheel chair access
2. Access for installation and service
3. Opening doors
4. Distance from walls and other objects
5. Under floor heating, pipe work and cables.

The floor directly under the bath and transfer area must be a solid and even surface.

Particular attention should be paid to the shaded area on the plan which need to be drilled to a depth of 100mm for fixing points and must be of solid construction with no buried services.

## Floor Fixing Points



## Electrical connection & Earth bonding.

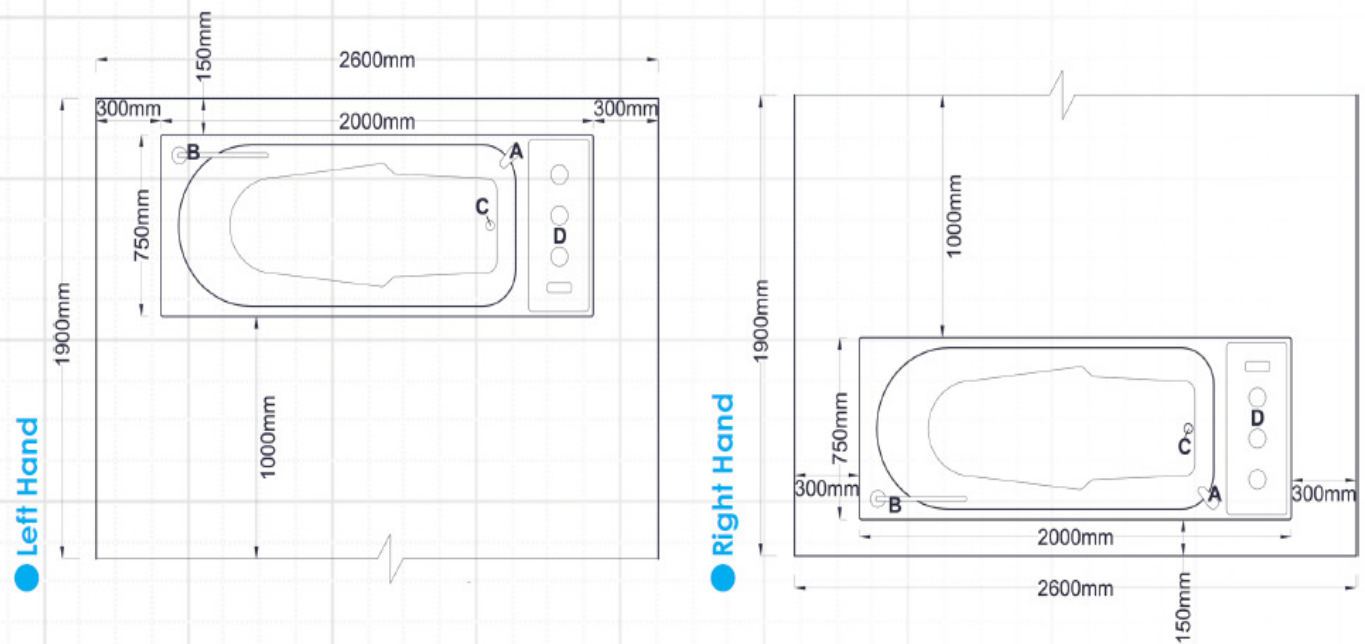
A 30mA RCCD is required in compliance with the current IEE regulation. This should be located just outside the bathroom or on the consumer unit covering that area of the building.

10mm Earth bonding and a minimum of 4mm cross bonding is to be fitted and tested for continuity in accordance with IEE regulations.

# Pre-Installation Requirements

- A Spout Position
- B Shower Position
- C Waste

- D Controls



# Water pressure

The unit includes a type 3 Heat guard Thermostatic mixing valve which has been manufactured to NHS model engineering specification D08 and approved under the TMV3 scheme.

Please read the following which outlines how a TMV3 may affect the use of your bath.

The working parameters of the TMV3 require a water pressure of 1-5 bars with a maximum pressure loss no greater than 10:1 between hot and cold feeds.

It is important to note that a pressure difference between hot and cold pipes will have a great effect on the time it takes to fill a bath.

i.e.

Hot water 1.4 bar and cold water 2.4 bar = approx. 9min to fill with 180 litres.

Hot water 2.2 bar and cold water 2.2 bar = approx. 5min to fill with 180 litres.

If in doubt a pressure test should be carried out prior to installation of the bath and if required a booster pump or pressure reducing valve fitted.

# Installation

Responsibility of the installer.

It is the responsibility of the installer to inspect the product prior to installation to ensure the unit is free of defect or damage. In the event of a problem the unit must not be installed.

This product complies with internationally recognised safety standards. However you are responsible for any local codes that may apply.

This product is designed to be installed by a licensed tradesperson. Licensed plumbers and electricians should be employed to ensure a proper installation. Installers assume all liability for the correct installation procedures.

Only accessories authorized by the manufacturer should be used with this product.

**Risk of electric shock.** Connect only to a separate circuit protected by a RCCD.

The unit must be connected to a RCCD. This should be tested on a routine basis. To test the RCCD push the test button, the RCCD should interrupt power. Push the reset button, power should be restored.

If the RCCD fails to operate in this manner there is a ground current flowing indicating the possibility of electric shock. Do not use this unit. The unit should be corrected by a qualified representative before any further installation is undertaken.

**Risk of electric shock.** Spa motors where fitted should be connected to a separate RCCD protected outlet.

Note: The unit must not be fitted in the bathroom area unless protected by an RCCD.

## **Classification & technical data.**

Fixed class 1 installation

Type B applied part

Not suitable for use in the presence of flammable anaesthetic mixture with air or oxygen or nitrous oxide.

Rated supply 230v, 240W 60Hz refer to label.

Maximum patient weight: 22 stones . 150kg

Maximum weight of bathtub, patient and water : 390kg

Suitable for intermittent use only - 2 minutes on - 18 minutes off.

The power pack is low voltage and runs at 24v DC . Immediately after installation and prior to use it is vital that the bath is connected to a mains supply for at least 24 hours before initial use to ensure the batteries are fully charged.

Failure to comply with this requirement could result in the user not being able in the event of a mains power failure.



# Installation

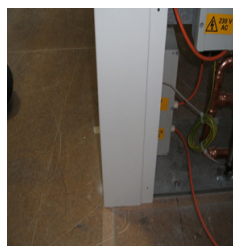
Do not use sharp knives or instruments to open this product.

Remove the plastic film from all panels.

- A. Check with the site owner to confirm the exact installation position.
- B. Inspect the unit and panels thoroughly.
- C. Ensure all components are present inside the bath pack. (this should include : repair pot, Manual, Waste kit, SWL sticker, floor fixing kit and shower unit assembly. (where applicable) report any missing items immediately quoting the number on the side of the unit.
- D. Remove any existing equipment and materials as necessary to prepare the site.
- E. Connect the bath unit on a temporary power supply . This will be indicated by a green light on the control box.
- F. Raise the bath using the touch pad.
- G. Fit the shower unit before positioning the bath in the installation position.
- H. Manoeuvre the bath into its installation position.
- I. Remove the transportation wheels and cross tie bars.
- J. Set the gap between the base plates to 1473mm
- K. Mark the position of the floor fixing holes
- L. Move the bath to allow drilling of the fixing holes
- M. Drill 4 x 10mm x 100mm deep in the floor at both ends. Clean out all dust and debris.
- N. Put in place the inner panels (wall side) and tunnel panel (where applicable) before fixing the bath to the floor.
- O. Re-position the bath and fix to the floor using the kit provided, ensure the plates are level.
- P. Connect the hot and cold water pipes.
- Q. Connect the waste pipe.
- R. Make the electrical connection .
- S. You will need to trim the panels around the pipe work and electrical connections on the tap end of this product.
- T. Check for any leaks and set the TMV temperatures. Taps 43°C and the Shower at 38°C
- U. Attach the safe working load to the panel and fully test the unit.



Seat end panel assembly



Tap end panel assembly



Fitting the lower panels



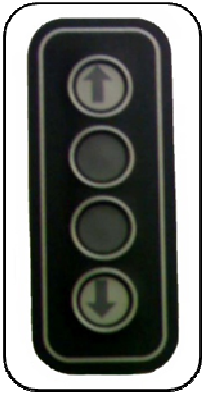
Fitting the drive fasteners



Securing the panels

# User Guide

Your Henley bath is simple to use. However there are some basic guidelines which should be followed to ensure you get the most out of your unit.

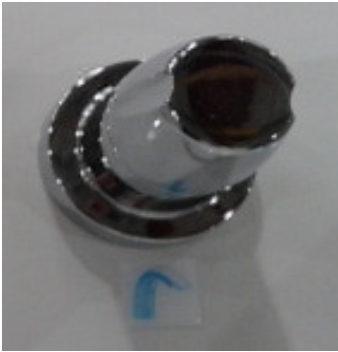


The Keypad control is to operate the baths hi-low function.

The Keypad buttons operate independently on a depress to run basis. If the button is released the unit will stop.

Holding down one button and then pressing the other will cause the unit to stop.

MAXIMUM USER WEIGHT IS 140kg



To operate the spout, open the valve marked "spout". This is pre set to 42°C.

Some products have a third valve fitted to add cold water only (specified models only).



To open and close the waste, use the Control knob located on the top edge of the bath tub. The waste will open and close on a half turn.

  
specialist bathing  
**HENLEY**  
 150kg (330lbs) MAX  
  
 OPERATION  
 MAXIMUM  
 2 MINUTES / 18 MIN CYCLE  
  
 



# User Guide

The water temperature is in excess of 100°F (38°C) may be injurious to your health. Check the temperature before use.

To operate the taps open the valve marked with the spout icon. this is the dedicated mixed water to the spout. This is pre set to 42°C.



To operate the shower open the valve marked with the shower icon and depress the handset.



This is a hair wash/rinse system only. This is pre set to 38°C. After use turn off the valve, depress the handset briefly to empty any water still inside the hose and then place the handset back into it's mount.

## User safety notes

To reduce the risk of injury do not permit children or persons with infirmities to use this product unless they are closely supervised at all times.

To avoid injury, exercise care when entering or exiting the bath.

Never drop or insert any objects into any openings.

Do not permit electrical appliances (such as hair dryer, lamp, telephone, radio or television ) within 152cm (60") of this product.

Avoid the abuse of alcohol, drugs or medication whilst using the bath.

Warning! Please ensure that hands and objects are kept away from the underside of the seat when lowering onto the trolley & into the bath.

Ensure all items for bathing including towels, face cloths, soap , shampoo etc. are within easy reach when using the bath.

# Maintenance

To get the most out of your bath we recommend that the unit is cleaned and maintained on a daily basis.

The bath can be cleaned with a medical disinfectant, especially if the product is to be used with multiple users.

Do not use abrasive type cleaners. Oven cleaners, scouring powders or bleach on this product. Avoid using chemical based cleaners in the touch pad area.

# Trouble shooting

Ensure this unit is not switched off.

The bath will operate as normal on battery back up, however the batteries will discharge quickly as they are only intended for emergency use.

When the batteries are at a low level the system will make a continual beeping sound. This will get louder as the batteries discharge further.

Re-apply mains power and allow 24 hours for the system to recharge before use.

If any other issues occur please contact your local supplier.

# Warranty

This product is warranted as being free from defects during the period of warranty. This does not cover minor blemishes, etc. which may be part of normal manufacturing processes.

The warranty covers manufacturing defects in the products, starting from the date of manufacture. Contact your Supplier to find out more about the warranty period. The warranty is limited to the value of the purchase price paid.

The warranty is only valid if the product has been used correctly. Where there are any mechanical or electrical parts, any damage, misuse or tampering with them will render the warranty invalid. Any sealed electrical boxes must remain unopened or this will invalidate any warranty.

THERE IS NO OTHER WARRANTY EXPRESSED OR IMPLIED INCLUDING, BUT NOT LIMITED TO, THOSE OF MERCHANTABILITY AND FITNESS FOR A PARTICULAR PURPOSE. THE FOREGOING WARRANTY IS LIMITED TO THE TIME PERIOD SPECIFIED FROM THE TIME OF RECEIPT. IN NO EVENT SHALL THE SUPPLIER BE LIABLE FOR ANY SPECIAL, INCIDENTAL, PUNITIVE, OR CONSEQUENTIAL DAMAGES INCLUDING BUT NOT LIMITED TO; LOSS OF USE. WHILE THIS WARRANTY GIVES YOU SPECIFIC LEGAL RIGHTS YOU MAY ALSO HAVE OTHER RIGHTS WHICH MAY VARY FROM STATE TO STATE.